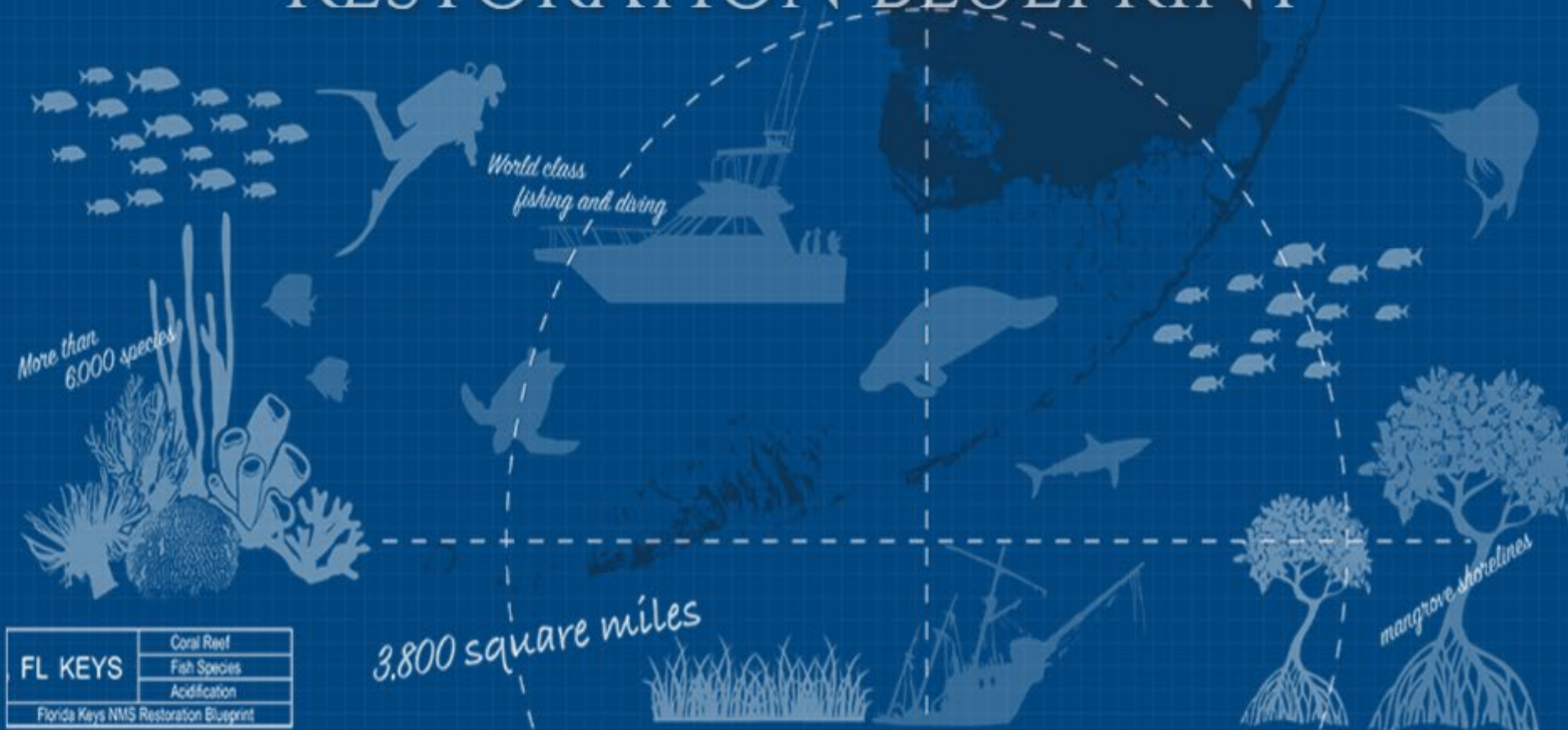




# FLORIDA KEYS NATIONAL MARINE SANCTUARY RESTORATION BLUEPRINT



FL KEYS	Coral Reef
	Fish Species
	Acidification
	Florida Keys NMS Restoration Blueprint



FLORIDA KEYS  
NATIONAL MARINE  
SANCTUARY

# Presentation Outline

- Restoration Blueprint Status & Timeline
- Proposed Rule highlights specific to Gulf of Mexico Fishery Management Council comment letter and authorities
  - Sanctuary boundary
  - Sanctuary-wide regulations
  - Marine zones & associated regulations
- Socio-Economic Analysis
- Management Plan
- Public outreach products and tools



Photo Credit: Catlin Seaview Survey



FLORIDA KEYS  
NATIONAL MARINE  
SANCTUARY

# Restoration Blueprint Timeline and Status

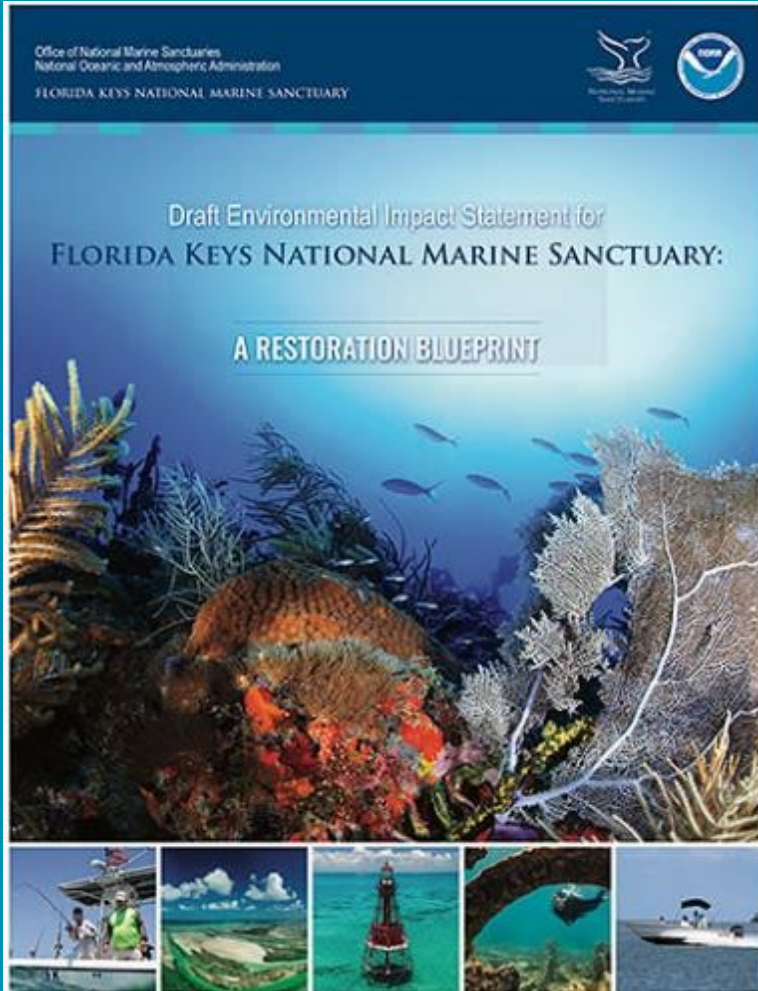






FLORIDA KEYS  
NATIONAL MARINE  
SANCTUARY

# Notice of Proposed Rulemaking



Proposed regulations for:

- Sanctuary boundary
- Sanctuary-wide regulations
- Marine zones & zone-specific regulations

Proposed Rule is informed by:

- Public and agency comment
- Updated socio-economic and environmental data

Pulls from all four alternatives included in the Draft Environmental Impact Statement

\*Management Plan is a separate document

# GMFMC comment letter topics & FKNMS proposed rule content

Topics in 2020 GMFMC comment letter	Included in the proposed rule
<i>Tortugas Corridor marine zone</i>	<i>Not included</i>
<i>Idle speed no wake in all SPAs</i>	<i>Not included</i>
<i>FKNMS Live Rock Aquaculture permit</i>	<i>Not included</i>
Boundary expansion at Pulley Ridge	Included
Temporary Regulation for Emergency & Adaptive Management	Included
Traditional Fishing definition and process for coordination	Included
Baitfishing permits in Sanctuary Preservation Areas	Included
Water Quality and FKNMS role	Included in draft management plan



## Florida Keys National Marine Sanctuary Restoration Blueprint: Revised Draft Management Plan



[floridakeys.noaa.gov/blueprint/](https://floridakeys.noaa.gov/blueprint/)

# Management Plan

**Focuses on understanding and improving the condition of sanctuary resources through reducing threats and addressing emerging issues**

Proposed actions focus on:

- targeted research
- updated and adaptive management efforts
- regulatory compliance
- community involvement
- stewardship



FLORIDA KEYS  
NATIONAL MARINE SANCTUARY



# Management Plan: Priority Themes

- Management Effectiveness and Adaptive Management
- Water Quality
- Restoration
- Visitor Use Management
- Enforcement
- Stewardship and Engagement





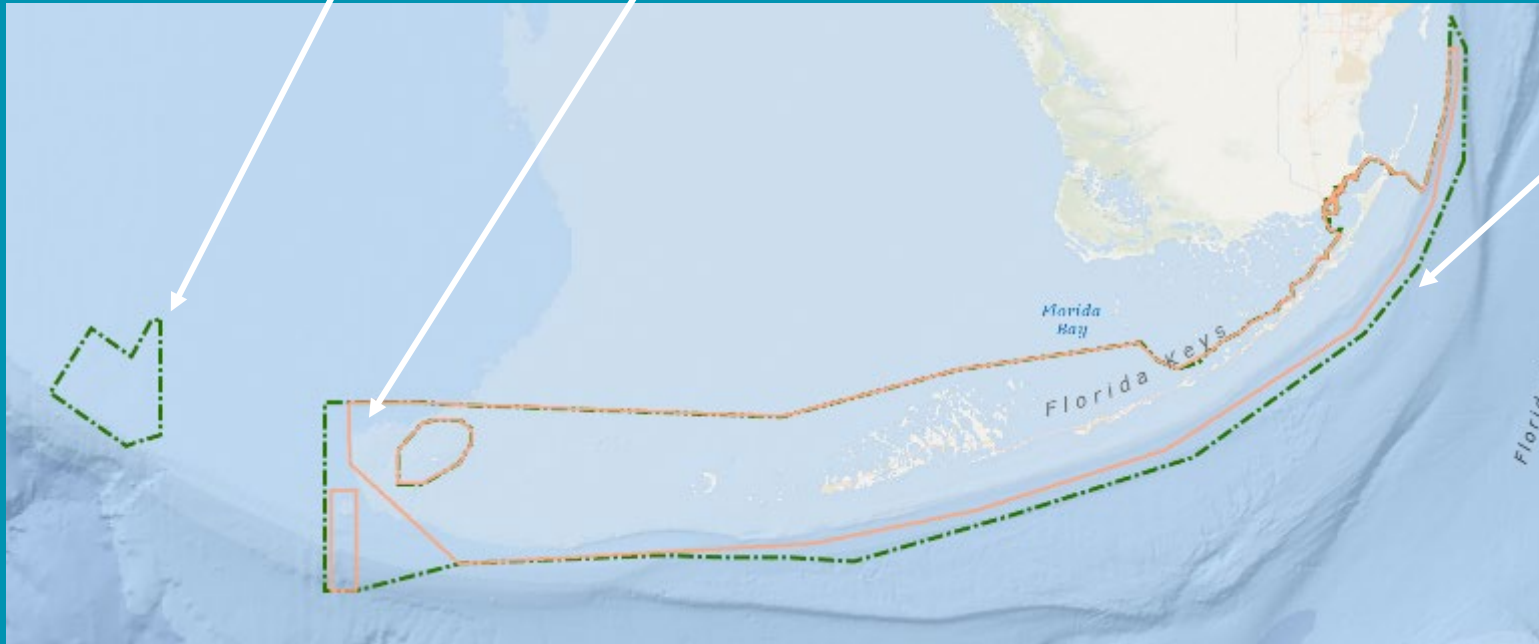
FLORIDA KEYS  
NATIONAL MARINE  
SANCTUARY

# Sanctuary Boundary: Proposed Expansion

Nationally Significant - Pulley Ridge

Connectivity - Tortugas Region

***Connect & Preserve Special Habitats***



**Consistent regulation** - Expand boundary to include areas already closed to large vessel traffic



Existing: 3,800 sq miles



Proposed: 4,800 sq miles





FLORIDA KEYS  
NATIONAL MARINE  
SANCTUARY

# TEMPORARY REGULATION EMERGENCY & ADAPTIVE MANAGEMENT

*Act Quickly to Respond & Protect*

Proposed regulation:

180-day action + optional 186-day extension

3 Categories:

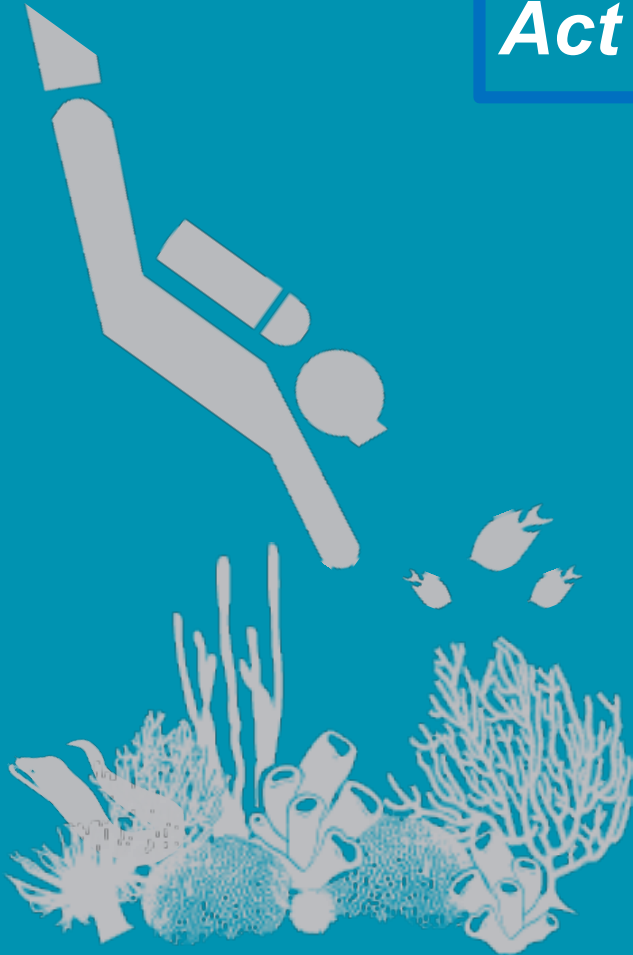
Minimize  
resources  
impacts

Initiate  
restoration

Facilitate  
timely  
research



Sets process for implementation





# Traditional Fishing

*Traditional fishing* means those commercial or recreational fishing activities that were customarily conducted within the sanctuary prior to its designation as identified in the 1996 Environmental Impact Statement and Management Plan for this sanctuary.

## Next Steps and Implementation:

- Work with NMFS, FWC, and the Gulf of Mexico and South Atlantic FMCs on an updated Protocol for Cooperative Fisheries Management to:
  - clarify traditional fishing activities, and
  - develop a transparent process to evaluate new or modified fishing activities and other relevant changes to fisheries management.

# Marine Zones & Associated Regulations: Proposal Goals

- Protect sensitive habitats and ecological functions
- Facilitate ecosystem restoration
- Simplify and create consistent regulations

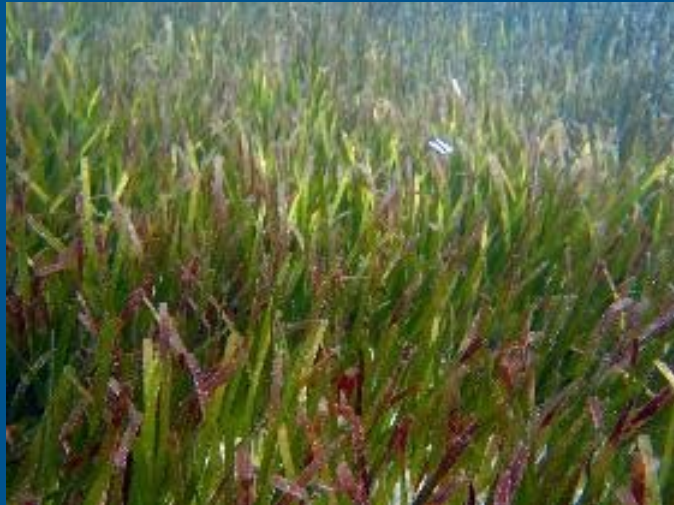


Photo Credit: Shawn  
Verne



FLORIDA KEYS  
NATIONAL MARINE SANCTUARY





FLORIDA KEYS  
NATIONAL MARINE  
SANCTUARY

# SANCTUARY PRESERVATION AREAS

*Separate Conflicting Uses, Protect Habitats, Create Consistency*

## 17 SPAs:

- 2 new
- Combine 2 existing
- Eliminate 2 existing



## Prohibit:

- Discharge
- Fishing or taking marine life
- Anchoring





FLORIDA KEYS  
NATIONAL MARINE  
SANCTUARY

# CONSERVATION AREAS

## *Protect Contiguous, Diverse Habitats & Facilitate Research*

### 6 Conservation Areas:

- All existing
- Eliminate Looe Key Special Use Area



### Prohibit:

- Discharge
- Fishing or taking marine life
- Anchoring, *except* in Western Sambo shoreward of reef line
- Entering except for continuous transit; stopping in Western Sambo is *allowed*

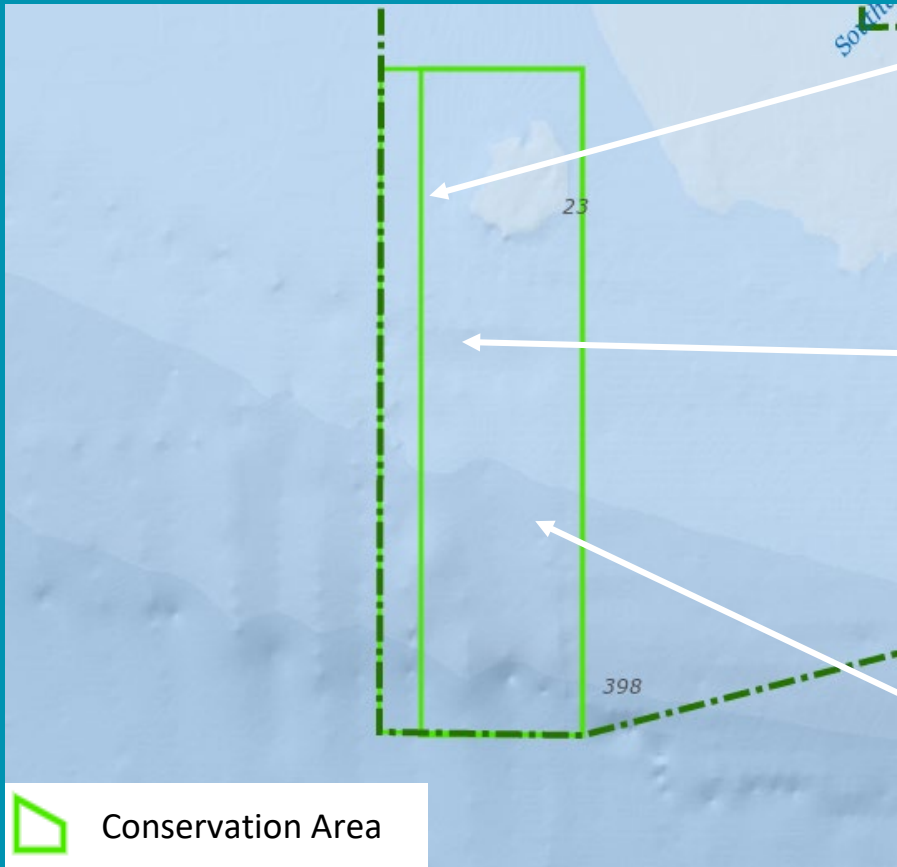




FLORIDA KEYS  
NATIONAL MARINE  
SANCTUARY

# CONSERVATION AREAS

**Modified:**  
**Tortugas South (90.38 sq miles)**



***Protect Additional  
Fish Spawning  
Habitat***

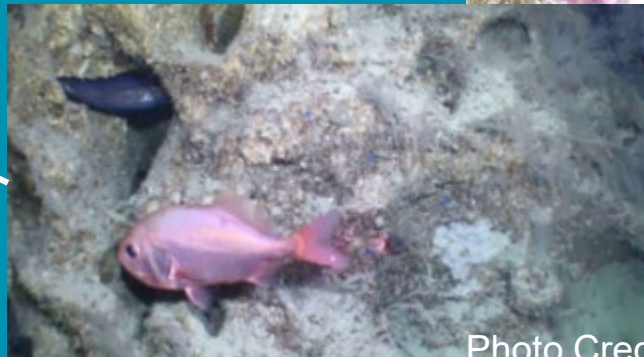


Photo Credit: NOAA NCCOS/UNCW UVP





FLORIDA KEYS  
NATIONAL MARINE  
SANCTUARY

# RESTORATION AREAS

## *Protect Nurseries & Facilitate Restoration*

Proposed new zone type

Create a restoration permit category



### 4 Habitat Restoration Areas

- Same as SPAs - no discharge, no take, no anchor



### 9 Nursery Restoration Areas

- Same as SPAs + transit only





# WILDLIFE MANAGEMENT AREAS

## *Protect & Minimize Wildlife Disturbance*

### Wildlife Management Areas

#### 47 Wildlife Management Areas

- 23 proposed new
- 2 existing combined into one
- 2 existing proposed eliminated

#### Regulations vary:

- Access and use restrictions address location-specific resource goals
  - Idle speed no wake
  - No motor
  - No anchor
  - No entry

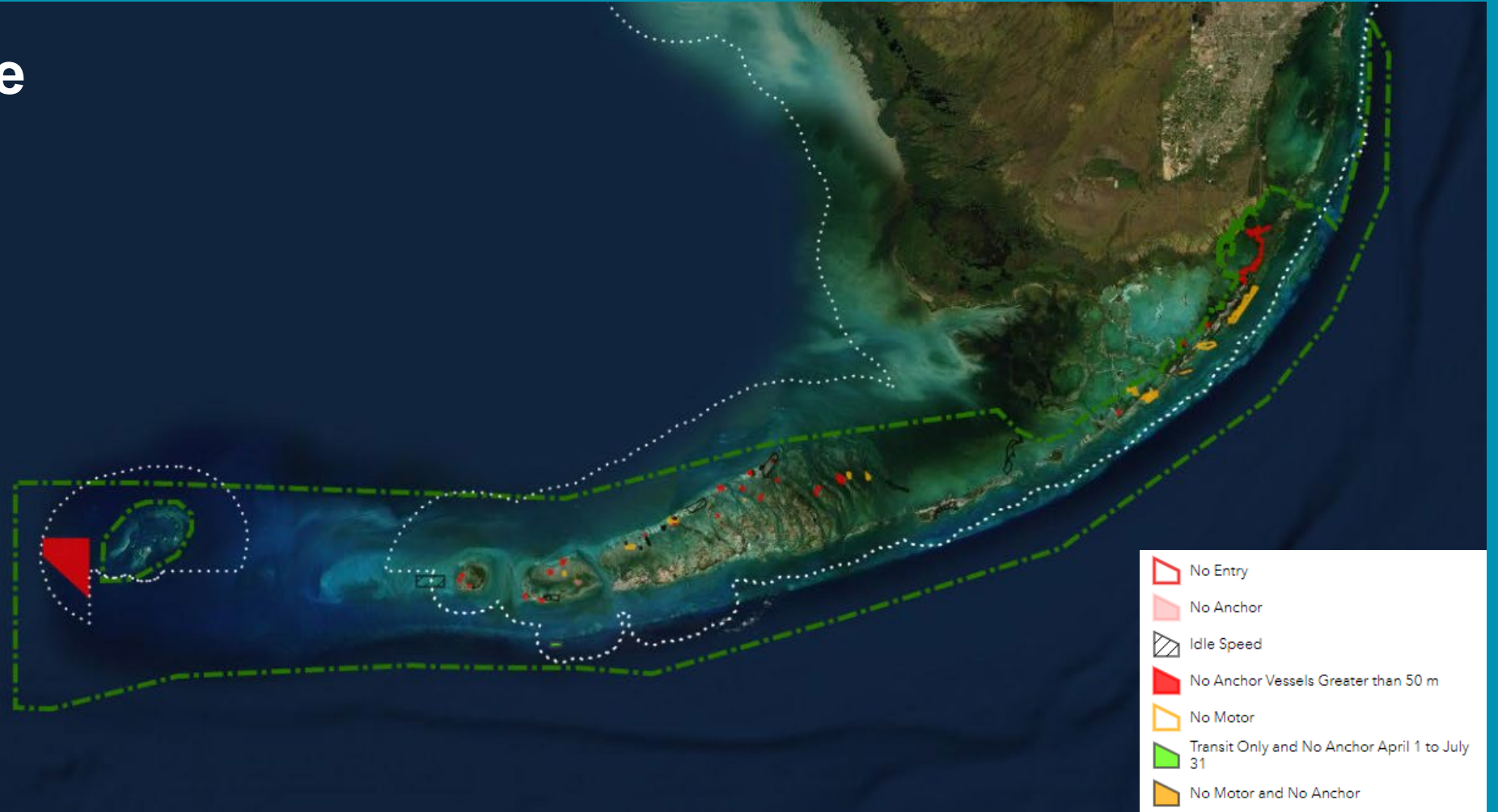




FLORIDA KEYS  
NATIONAL MARINE  
SANCTUARY

# WILDLIFE MANAGEMENT AREAS

## Proposed Rule





# Existing and Proposed No Take Marine Zones: comparison of number and area of zones

Zone Type	Status Quo	Proposed Rule
Sanctuary Preservation Areas	18 (6.4 sq miles)	17 (12.1 sq miles)
Conservation Areas	7 (193.9 sq miles)	6 (213.1 sq miles)
Restoration Areas (Habitat and Nursery)	0	13 (1.4 sq miles)
Wildlife Management Areas	15 (1.14 sq miles)*	24 (2.8 sq miles)**

\*Includes closed or no-access buffer wildlife management areas, or those that have a portion that is closed or no access buffer

\*\*Includes proposed no entry and transit only wildlife management areas, or those that have a portion that is no entry



FLORIDA KEYS  
NATIONAL MARINE SANCTUARY

# Existing and Proposed No Take Marine Zones: comparison of area and percentage of area within state vs. federal waters

	Status Quo	Proposed Rule	Change
Total area	201.4 sq miles 5.3%	229.5 sq miles 4.78%	+ 28.1 sq miles
Federal waters	94 sq miles 2.47%	115.7 sq miles 2.41%	+ 21.7 sq miles
State waters	107.4 sq miles 2.82%	113.8 sq miles 2.37%	+ 6.4 sq miles

Note: The overall sanctuary boundary is expanded by 1,000 square miles so percentages are not directly comparable.



FLORIDA KEYS  
NATIONAL MARINE SANCTUARY

# Socio-Economic Analysis

## Benefits

Maintaining the flow of services afforded by healthy marine ecosystems:

- productive fisheries
- tourism
- recreational opportunities
- non-market value

## Costs

Maximum potential loss (assuming no replacement):

- less than 1% of annual revenue for all affected fisheries (commercial and recreational)
  - Excepting lobster fishery (~2% annual loss)



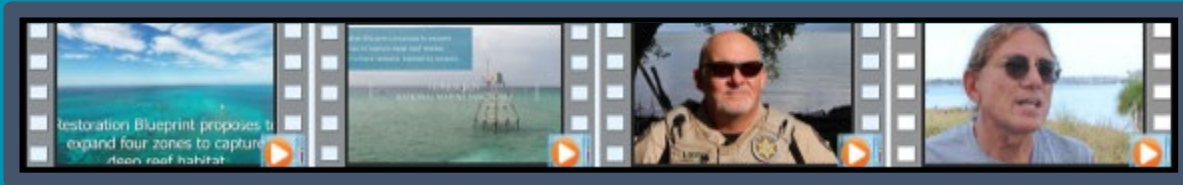


FLORIDA KEYS  
NATIONAL MARINE  
SANCTUARY

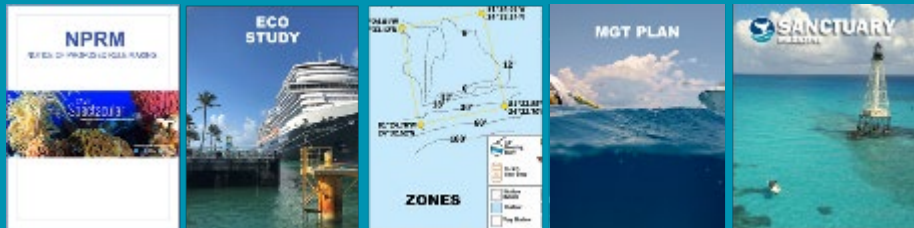
# Resources for public engagement:

<https://floridakeys.noaa.gov/blueprint/>

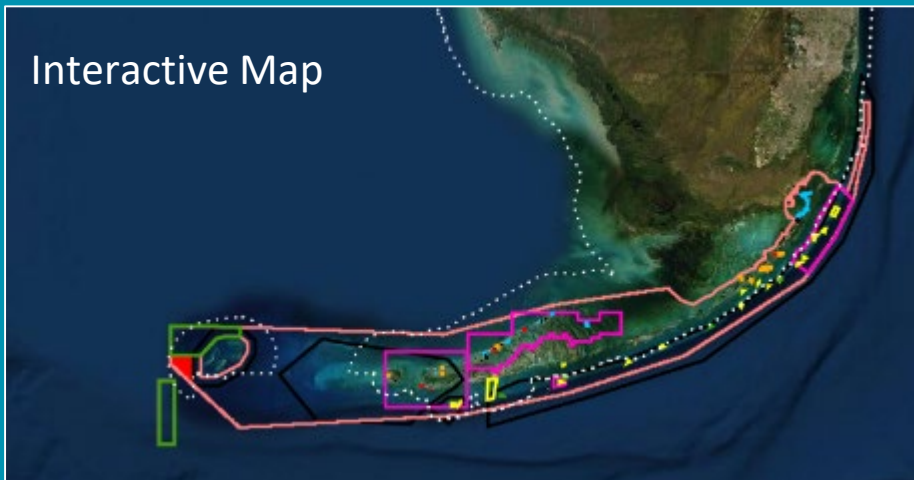
## Video Library



## Document Library



## Interactive Map



## Public Meeting Information & Registration Links

COMMENT  
NOW

## Summary Presentation



FLORIDA KEYS  
NATIONAL MARINE  
SANCTUARY

### Presentation Outline

- Why Create a Restoration Blueprint
- Restoration Blueprint timeline and status
- Proposed Rule highlights
  - Sanctuary boundary
  - Sanctuary-wide regulations
  - Marine zones & associated regulations
- Public outreach products and tools
- Next steps and how to stay engaged



Photo Credit: Carlos Sosa/SeaLegacy



# Public Engagement Opportunities

## ASK QUESTIONS

- ✓ August 16 - Virtual Q&A

## PUBLIC COMMENT

- ✓ August 30 - Virtual Public Comment
- ✓ September 20 - Key Largo - Key Largo Coral Shores High School Auditorium - 6 p.m.
- ✓ September 21 - Marathon - Marathon High School Auditorium - 6 p.m.
- ✓ September 22 - Key West - Key West High School Auditorium - 6 p.m.
- October 18 - Sanctuary Advisory Council Meeting, 9 a.m., Marathon



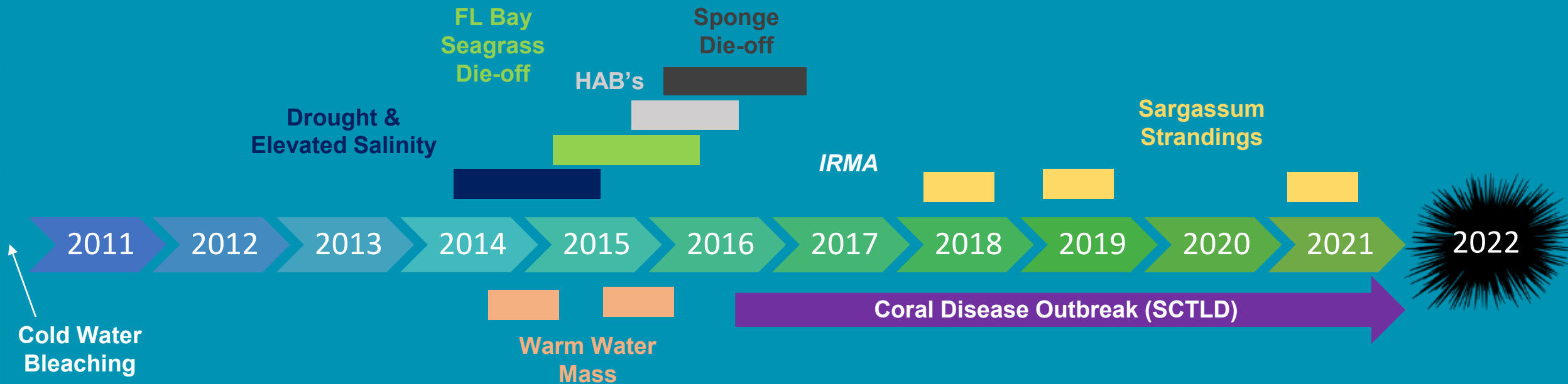
FLORIDA KEYS  
NATIONAL MARINE SANCTUARY



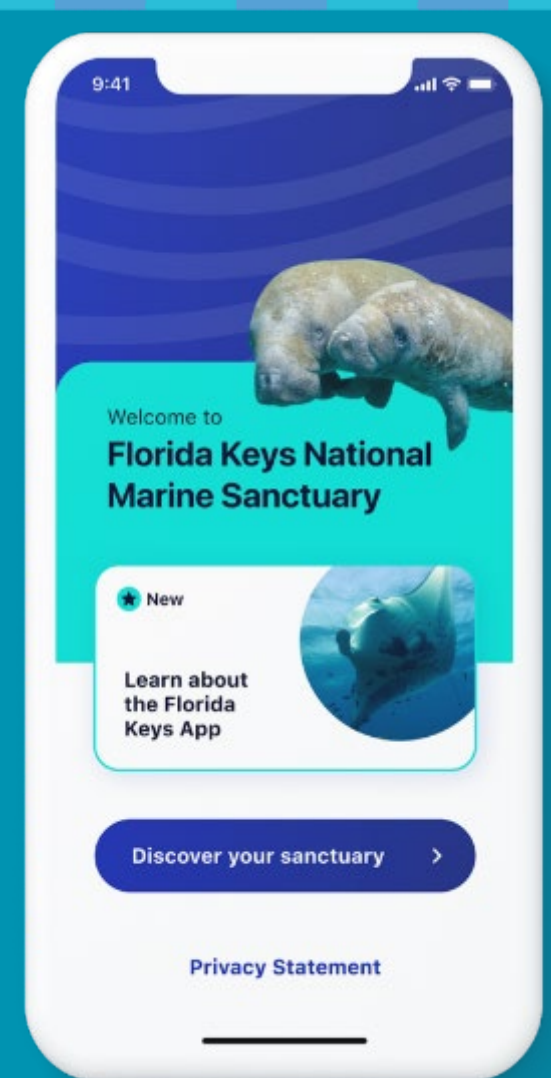
**FLORIDA KEYS**  
**NATIONAL MARINE SANCTUARY**

[FloridaKeys.noaa.gov/blueprint](https://FloridaKeys.noaa.gov/blueprint)

# Since 2011...



# Local Action to Enhance Resilience







FLORIDA KEYS  
NATIONAL MARINE  
SANCTUARY

# Tennessee Reef Conservation Area

*Facilitate Research, Protect Habitats*

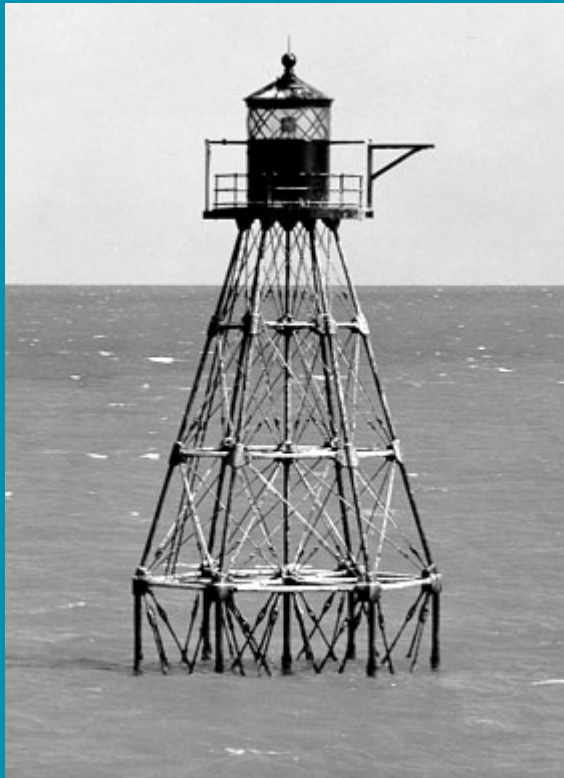


Photo Credit: USCG

